

Patient information

Haemoglobinopathy Disorders Adults who have Sickle Cell Carrier / Trait

Haematology Liverpool

What is my test result?

The substance in your blood that carries oxygen around your body is called haemoglobin. You had a blood test recently to check your haemoglobin type. The test result shows that you are healthy – there is no need to worry about being unwell. But the result shows that you are a sickle cell carrier (some people call it ‘having a trait’). This leaflet gives you information about being a carrier, and what this means for you and your family.

What is a sickle cell trait/carrier?

For everything that you inherit, you get one gene from your biological mother and one gene from your biological father. For example, your genes control the colour of your skin, hair and eyes. Your genes also control the type of haemoglobin you inherit. The usual type is called ‘A’. You have inherited the usual haemoglobin A from one of your parents, and a gene that makes unusual haemoglobin (in your case Hb S - sickle cell) from the other parent. We call this being a sickle cell carrier.

Because you have inherited usual haemoglobin A from one parent, you are healthy. You will never develop a haemoglobin disorder. But there is a chance that you could pass on the gene for sickle cell to your children.

How is my test result written?

The type of haemoglobin you have inherited is written Hb AS (or sickle cell trait or carrier or haemoglobin S carrier).

- The letters ‘Hb’ stand for haemoglobin.
- The letter ‘A’ shows your usual type of haemoglobin.
- The letter ‘S’ shows your unusual (sickle cell) type of haemoglobin.

What does this result mean for me?

There are two reasons why you need to understand about being a sickle cell carrier. The first is you need to know the risks of passing the gene for sickle cell on to your children. We explain this on the following pages. The second is that, in very rare situations, there are some possible health issues for you.

Rare health issues

Being a sickle cell carrier does not make you ill. In day-to-day life you are just as healthy as anyone else. The only time there may be health problems is during situations where you might not get enough oxygen.

These include the following:

- **During a general anaesthetic.** If you need a general anaesthetic, you should tell medical staff that you are a sickle cell carrier, so they can make sure you always get enough oxygen. **You should check that there is full medical back-up anywhere you have a general anaesthetic (for example, when having dental treatment).**
- **During extreme sports such as deep-sea diving, ultramarathons or high altitude mountain climbing.** If you do sports like these, you should take care that you are never short of oxygen.
- **If you do regular, intensive** athletic activity, you should drink plenty of fluids during training and avoid extreme exhaustion.

Apart from these very rare situations, as a sickle cell carrier you live a completely normal life.

What could my result mean for my children?

As a carrier, you could pass on the gene for sickle cell to any children that you have. Only the biological parents can pass this genetic information on to their child.

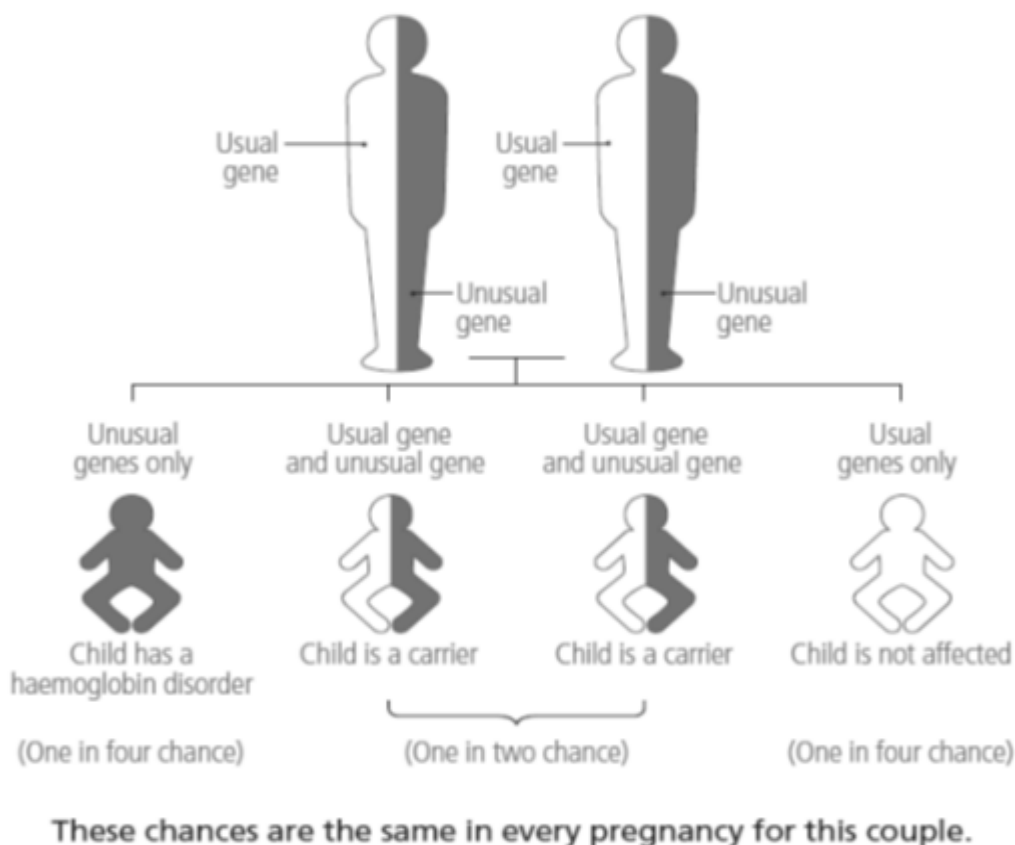
If you have a child with a partner who has the usual haemoglobin AA, there is a one in two (50%) chance that your child could be a carrier (like you).

If you have a child with a partner **who is a sickle cell carrier** (haemoglobin AS), there is a one in four (25%) chance that your child could inherit sickle cell anaemia (also called sickle cell disease). This is a serious health condition which is explained in the following pages.

If you have a child with a partner who carries a gene for **any other unusual type of haemoglobin**, there is a one in four (25%) chance that your child could inherit another type of sickle cell disease. The seriousness of the condition will depend on which genes are inherited.

Your partner will only know they are a carrier if they have had a specific blood test to check their status. Both men and women can ask for a test at any time from their family doctor (GP) or from their nearest specialist sickle cell and thalassaemia centre.

Below is a diagram showing examples of how haemoglobin inheritance works.



What does my result mean for other people in my family?

The fact that you are a sickle cell carrier means other members of your family could be carriers too. It is a good idea to talk to your blood relatives (such as your parents, brothers, sisters, uncles, aunts and cousins) and encourage them to get a test before they start a family, or have any more children. Showing them this leaflet may help.

Information about sickle cell disease

Please remember that you are a 'carrier' and do not have sickle cell disease. The following is for information only. The most serious type of sickle cell disease is sickle cell anaemia (Hb SS).

People with sickle cell disease:

- can have attacks of very severe pain;
- can get serious, life-threatening infections;
- are usually anaemic (which means that their blood has difficulty carrying oxygen); and
- need medicines and injections when they are children and throughout the rest of their lives to prevent infections.

There are also other, less common haemoglobin disorders. Many of these are not serious.

Common questions

Why didn't I know about this? I have had blood tests before.

Routine blood tests do not show if you are a carrier. To find this out you need a special blood test for unusual haemoglobin.

What's the difference between being a carrier and having sickle cell disease?

Carriers are generally well and are only identified with careful testing. People with sickle cell disease are often ill and need treatment.

As a carrier could I develop sickle cell disease?

No, you cannot develop sickle cell disease because you have one gene which makes the usual haemoglobin, Hb A. But you will always be a carrier.

Is being a carrier infectious?

No, you can only be a carrier if you inherit the gene from one of your biological parents.

Does being a carrier affect my ability to have children?

No, it does not affect your ability to have children.

Am I protected from malaria?

No, you are not protected from malaria. It is important that you take all the normal precautions if you are travelling to a country where there is a risk of malaria. This includes taking anti-malaria medication.

What should I do now?

- Let your family doctor (GP) know that you are a sickle cell carrier. If you are expecting a baby or planning to have a baby, now or in the future, we strongly recommend that your partner gets tested to see if they are a carrier.
- If you already have children, you may want to have them tested as well.
- It is a good idea to talk to other members of your family and encourage them to have a test before they start a family or have any more children. It is equally important for men and women to be tested.
- The test for unusual haemoglobin is a simple blood test and takes just a few minutes. People can ask for the test at any time in their life.

If you require any further information, please speak to a member of your medical/nursing team below.

NHS Sickle Cell and Thalassaemia Screening Programme Leaflets
www.sct.screening.nhs.uk/

Specialist Haemoglobinopathy Team

Consultant Haematologist

Lead Clinical Nurse Specialist

Two Clinical Nurse Specialists

Haematology Specialist Registrar (Rotational Position)

Clinical Psychologist

Feedback

Your feedback is important to us and helps us influence care in the future.

Following your discharge from hospital or attendance at your outpatient appointment you will receive a text asking if you would recommend our service to others. Please take the time to text back, you will not be charged for the text and can opt out at any point. Your co-operation is greatly appreciated.

Further Information

Contact Details:

Clinical Nurse Specialist

Tel: 0151 706 3397

Textphone Number Tel: 18001 0151 706 3397

Haematology Department

Tel: 0151 706 3397

Textphone Number: 18001 0151 706 3397

Author: Haematology Liverpool

Review date: January 2028

All Trust approved information is available on request in alternative formats, including other languages, easy read, large print, audio, Braille, moon and electronically.

يمكن توفير جميع المعلومات المتعلقة بالمرضى الموافق عليهم من قبل انتمان المستشفى عند الطلب بصيغ أخرى، بما في ذلك لغات أخرى وبطرق تسهل قراءتها وبالحروف الطباعية الكبيرة وبالصوت وبطريقة برايل للمكفوفين وبطريقة مون والكترونياً.

所有經信托基金批准的患者資訊均可以其它格式提供，包括其它語言、易讀閱讀軟件、大字

體、音頻、盲文、穆恩體 (Moon) 盲文和電子格式，敬請索取。

در صورت تمایل میتوانید کلیه اطلاعات تصویب شده توسط اتحادیه در رابطه با بیماران را به اشکال مختلف در دسترس داشته باشید، از جمله به زبانهای دیگر، به زبان ساده، چاپ درشت، صوت، خط مخصوص کوران، مون و بصورت روی خطی موجود است.

زانیاری پتوهندیدار بهو نهخوشانهی له لایهن تراستهوه پهسهند کراون، نهگهر داوا بکریت له فورماتهکانی تردا بریتی له زمانهکانی تر، نیزی رید (هاسان خویندنهوه)، چاپی گهوره، شریتی دهنگ، هیلی موون و نهلیکترۆنیکی ههیه.

所有经信托基金批准的患者信息均可以其它格式提供，包括其它语言、易读阅读软件、大字体、音频、盲文、穆恩体 (Moon) 盲文和电子格式，敬请索取。

Dhammaan warbixinta bukaanleyda ee Ururka ee la oggol yahay waxaa marka la codsado lagu heli karaa nuskhado kale, sida luqado kale, akhris fudud, far waaweyn, dhegeysi, farta braille ee dadka indhaha la', Moon iyo nidaam eletaroonig ah.